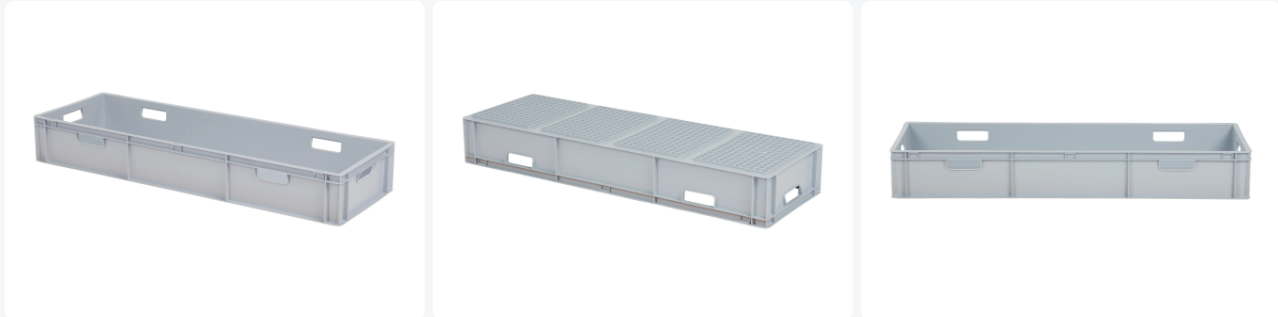


Article number: 8.124017.O.1

Printing possible



# Stacking bin 1200x400xH171mm closed 6 OH grey



## Product specifications

External (LxWxH)	1200 x 400 x 171 mm
Internal (LxWxH)	1154 x 355 x 156 mm
Max. stacking load (kg)	250 kg
Capacity	64 liter
Handles	Open
Sidewalls	Closed
Material	PP
Article number	8.124017.O.1
Weight (kg)	3,46 kg
Temperature range	-10°C to+60°C
Color	Grey
Bottom	Closed, reinforced
Load capacity (kg)	40
Quantity per pallet	26

## Features

**Dimensions: 1200 x 400 x H 171 mm**

**Capacity: 64 liters**

**Food-safe**

**Fully closed plastic Euro norm stackable container**

**Reinforced bottom for added strength**

**Six handles for easy handling**

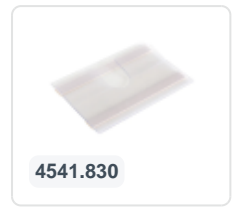
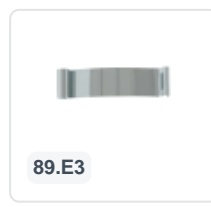
**Suitable for various applications, such as storage and transport of food products and other goods.**

## Description

Fully enclosed stacking container in Euro-standard dimensions of 1200 x 400 mm. The container has a capacity of 64 litres and a height of 171 mm, including the reinforced base. This large-capacity stacking container can be perfectly combined with standard pallets measuring 1200 mm in length, allowing for efficient palletization and optimal utilization of storage and transport space.



## Suitable accessories



## Alternative articles

