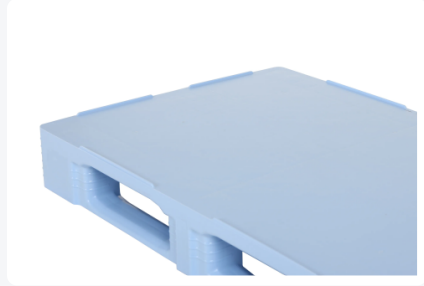
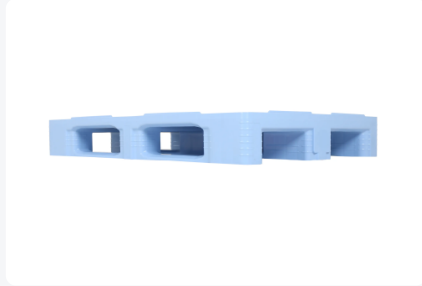
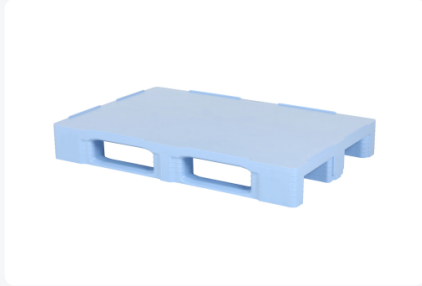


Article number: 87065301

Printing possible



Euro pallet TC1 - 1200 x 800 mm - with 7 mm rims - 3 skids - light blue



Product specifications

| | |
|-------------------------|-------------------------------------|
| External (LxWxH) | 1200 x 800 x 160 mm |
| Dynamic load capacity | 1500 kg |
| Material | HDPE |
| Article number | 87065301 |
| Weight (kg) | 18 kg |
| Temperature range | -30°C to +40°C, briefly up to +90°C |
| Color | Blue |
| European Article Number | 7424915316392 |
| Static load capacity | 7500 kg |
| Edge height | 7 mm |
| Load capacity in racks | 1000 |
| Quantity per pallet | 15 |

Features

The deck is fitted with 7 mm raised rims all around.

This light-blue pallet version is made from high-quality virgin HDPE, offering excellent impact resistance and a long service life.

Light-blue colour variant compared with standard grey; in some applications required for optical detection.

Top and bottom of the pallet deck are fully closed.

Maximum cleanability and hygiene.

The TC1 pallet is easy to clean manually and by machine.

Suitable for direct contact with food.

High impact resistance thanks to the patented welding of the top deck.

High racking load capacity up to 1,000 kg.

By adding 3 fully integrated reinforcement profiles in the deck (longitudinal), racking capacity can be increased up to 1,750 kg (on request).

The connections between the blocks and the skids, and between the blocks and the deck, are additionally reinforced, minimising the risk of breakage at these sensitive points.

The TC1's intelligent block design provides improved grip for stretch and wrapping film.

TC1 skids are chamfered on both sides for handling equipment.

Marking, logos and numbering on request; position to be agreed.

Options: pallet lid / pallet cover - pallet collars - QR codes and barcodes - fully integrated metal inserts (longitudinal) - RFID transponders - top deck without rims, with 22 mm rims, or with 22 mm outer rims - fully Palgrip anti-slip top deck.

Description

The TC1 pallet is our fully closed plastic pallet in Euro size 1200 x 800 mm. This 3-skid version is also part of the Totally Closed (TC) series. This product range has proven itself extensively in the food sector, pharmaceuticals and the chemical industry - wherever easy cleaning and hygiene are essential.

The base of this TC1 version is produced in light blue. This variant is used to create colour differentiation (compared with standard grey) and, in some applications, because optical detection is used.

Among the pallets available on the market with a completely smooth and closed deck, the TC pallet is the number one in terms of impact resistance. This is achieved through the patented welding of the top deck, with maximum wall thicknesses and a smart impact zone.

The deck is fitted with 7 mm raised rims all around. In most cases, this is sufficient to centre loads and empty pallets when stacked. Practical testing is the best guideline here. Where maximum anti-slip is required, our Palgrip version with an anti-slip top deck is the best solution.



Suitable accessories

Alternative articles

