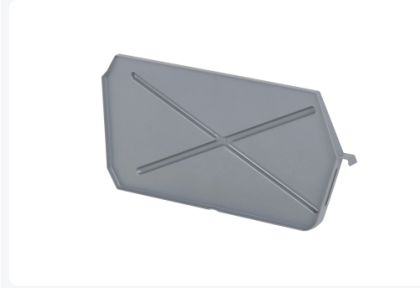
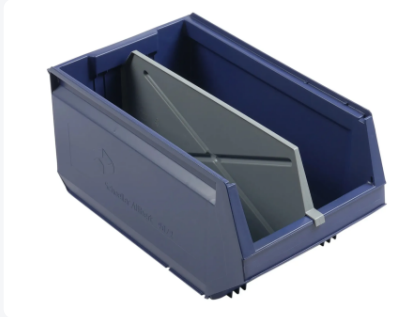


Article number: 9072.500.504



# Longitudinal divider - for Store Box 9072 - plastic - grey



## Product specifications

External (LxWxH)	490 x 20 x 230 mm
Material	PS
Article number	9072.500.504
Weight (kg)	0,33 kg
Temperature range	-10°C to +40°C, briefly up to +60°C
Color	Grey

## Features

Plastic longitudinal divider for Store Box type 9072 (500 x 310 x H 250 mm)

Divider dimensions: 490 x 20 x H 230 mm

The longitudinal divider is fixed in retaining grooves - integrated into the walls at the front and rear

The divider is firmly enclosed and locked in the recesses

After fitting the longitudinal divider, two compartments are created next to each other

Width of both compartments: 133 mm - excluding the splayed walls (= extra storage space)

This allows different products to be stored in the Store Box while accessibility remains guaranteed

## Description

**Longitudinal divider** (490 x 20 x H 230 mm) made of plastic. Suitable as a longitudinal divider for Store Box / storage bin **type 9072** (500 x 310 x H 250 mm). The longitudinal divider is fixed in retaining grooves. This keeps the divider firmly enclosed and locked in place.

**The longitudinal divider divides the Store Box into two compartments - each with a width of 133 mm.** This keeps the storage bin easily accessible.



## Suitable accessories



## Alternative articles

