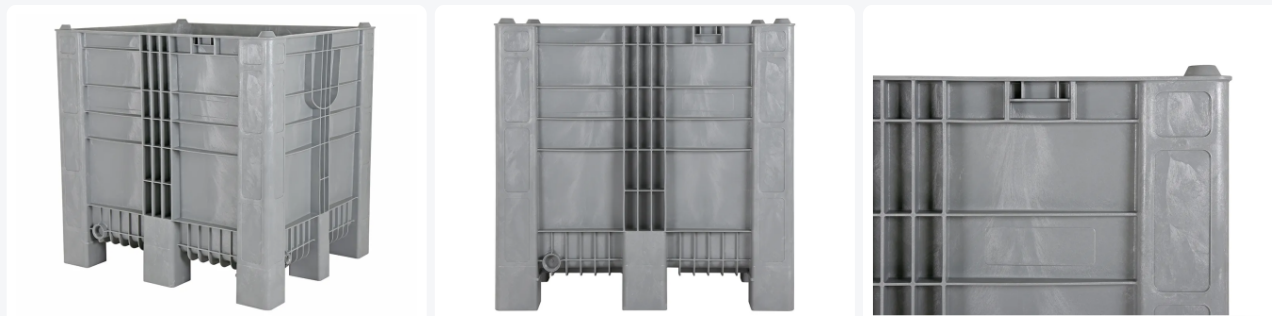


Article number: 83271890

Printing possible



CB3 High pallet box - 1200 x 1000 x H1140 mm - 9 feet - light grey



Product specifications

External (LxWxH)	1200 x 1000 x 1140 mm
Internal (LxWxH)	1110 x 897 x 983 mm
Capacity	1000 liter
Sidewalls	Closed, reinforced
Material	HDPE
Article number	83271890
Weight (kg)	49,5 kg
Temperature range	-30°C to +40°C, briefly up to +90°C
Color	Grey
Bottom	Closed, reinforced
Max. load capacity per box	1000 kg
Max. static stacking load	4000 kg
Max. dynamic stacking load	1500 kg
Quantity per pallet	2

Features

CB3 High plastic large-volume pallet box - dim. 1200 x 1000 x H1140 mm - 1000 liter

Closed side walls and a reinforced base - for safe storage

Equipped with 9 robust feet

The feet form one integral unit with the box - in the same high-quality product standard

The underside of the box base is fitted with a robust ribbed structure for minimal deflection

A ribbed buffer zone is fitted all around above the fork entry openings to prevent collision damage

The CB3 High is highly suitable for heavy-duty and intensive applications

With a load capacity of 1000 liter, allowing stacking up to 5 high (1+4)

The CB3 High stacks by means of lugs on the corners and is an excellent addition to existing box pools using this stacking system

With integrated mounts for RFID tags on both long sides (tracking & tracing)

With a 1" outlet facility on the short side and a 2" outlet facility on the long side

Options: lid - print - QR codes and barcodes - RFID transponders - with drop door - mobile - with lateral trunnions (sideways) - on 3 skids - with funnel base and bottom outlet - check taps - screw plugs - coversheets

Description

The construction

This large-size pallet box is injection-moulded in one piece, with the box and the base forming a single unit. That is a technical achievement in itself, but it also serves a very practical purpose. Its large 1000 litre capacity requires an exceptionally robust construction, especially when the box is used intensively in logistics. Thanks to its design, the CB3 High can handle these heavy-duty applications without any difficulty. For situations where pallet skids get in the way, we supply this version on 9 feet. In that case, damage to pallet skids is no longer an issue, while the stability of the box easily supports this design.

Logistics

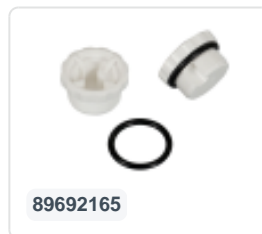
Pallet boxes used in production environments or logistics operations are heavily exposed to wear and tear in practice. Intensive forklift transport in particular presents a challenge. The CB3 High on 9 feet is perfectly equipped for both applications. First of all, a robust ribbed structure is positioned above the entry openings all around the box. This structure acts as a buffer zone to prevent collision damage from internal transport equipment, and it works very effectively. In addition, the base is fitted with a substantial ribbed structure. Together, these features provide a solid foundation for the most demanding logistics conditions.

Its versatility

The CB3 High is primarily designed for heavy loads and for handling bulk goods. This large-volume box has the perfect dimensions for that purpose: the industrial size 1200 x 1000 mm and a box height of 1140 mm. Based on its height, the boxes can easily be stacked 2-high in most trucks. Due to the positive experience with this large-volume box, the CB3 High is now available in several versions. Custom-made versions with funnel base, DUO variants and versions with drop door are good examples. Because the box is designed as a durable load carrier with a long service life, the CB3 High is fitted with integrated mounts for RFID transponders for tracking & tracing. This makes the box traceable and turns the CB3 High into a smart box. This feature is also essential for the food industry, for which this large-volume box is perfectly equipped. Because the CB3 High stacks using stacking lugs on the corners, it is inter-stackable with (pool) boxes that are widely used in the food sector. In short, the CB3 High certainly lives up to what it represents: robustness, volume and durability. See for yourself and put it to the test.



Suitable accessories



Alternative articles

