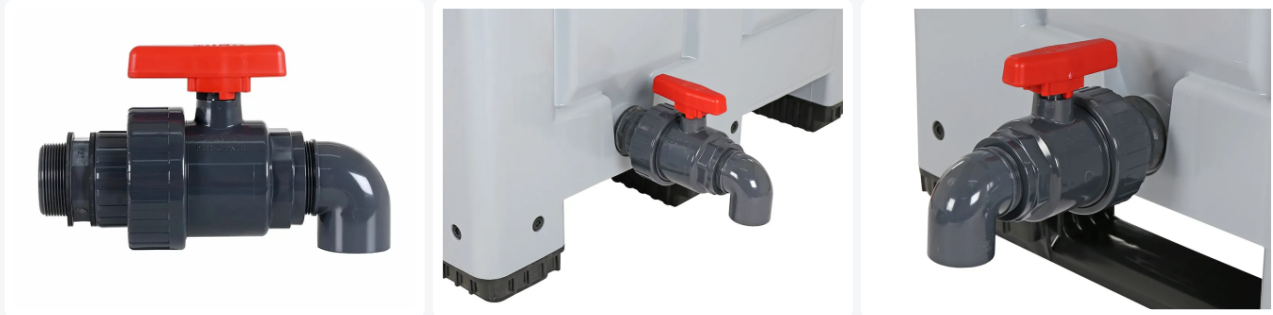


Article number: 1612252



Check tap 2" with angled outlet for pallet boxes - unmounted - dark grey



Product specifications

External (LxWxH)	285 x 125 x 160 mm
Material	PVC
Article number	1612252
Weight (kg)	1,32 kg
Temperature range	-10°C to +50°C, briefly up to +90°C
Color	Grey

Features

Plastic check tap 2" with screw-on angled outlet

Colour dark grey - suitable for outdoor applications

The check tap allows liquids to drain in a controlled manner

For mounting, the tap is fitted with a 2" feed-through with rubber sealing rings

When ordered, this check tap is supplied unmounted

Description

Plastic check tap 2" with external thread and angled outlet. The adjustable check tap with dimensions of 285 x 125 x 160 mm is suitable for mounting in plastic pallet boxes, transport containers, Multi-Purpose containers, grit bins etc. The check tap is supplied **unmounted**. For mounting, an outlet opening and screw thread must be present in the box.

Suitable accessories



Alternative articles

